



**SonFlow**

# SonFlow AHRI-Certified®

## Plate Heat Exchangers



# SonFlow Plate Heat Exchangers Certified by AHRI

At SonFlow, we are proud to label our products AHRI-Certified. Our goal is to provide our customers with the best possible solution. Our SonFlow plate heat exchangers are designed with the latest technology and engineered to provide our customers with the best thermal performance, efficiency, and reliability.

The AHRI certification program provides independent assurance to our customers that our plate heat exchangers will perform exactly as specified, and that they can trust our products to deliver the performance they need.

## Industries

- General cooling/heating
- HVAC
- Refrigeration
- Industrial
- Marine
- Food & beverages
- Chemicals
- Mining
- Electronics
- Data centers

## Who is AHRI?

AHRI, or the Air Conditioning, Heating, and Refrigeration Institute is the trade association representing manufacturers of HVACR and water heating equipment. The institute's certification program aims to enhance the integrity of the HVAC industry by making performance standards transparent.

AHRI-Certified is the only globally recognized third-party performance certification for plate heat exchangers.

SonFlow plate heat exchanger range is certified in the following AHRI Certification Program:

*Liquid to Liquid Heat Exchangers (LLHE) - ANSI/AHRI 400 Certification Program as an Original Equipment Manufacturer (OEM).*

## Focus on Sustainability

Another benefit of the AHRI certification program and standards is that it helps our customers save energy and promote a better environment. By making the performance standards visible, we can ensure our customers, that our plate heat exchangers will perform optimally with reduced lifetime operating costs.

At SonFlow we are dedicated to making environmentally conscious and sustainable choices, for the products we produce and at our production facilities. The AHRI certification is an important step for us in this pursuit.



## AHRI Certified®

AHRI Certified® is the trusted mark of performance for heating, air conditioning, water heating, and commercial refrigeration equipment. Products earning the mark are subject to rigorous, independent, annual evaluation to ensure that they perform according to the participant's published claims. Certifying equipment and component performance allows consumers to compare products based on independently verified performance ratings. To find AHRI Certified products, go to [www.ahridirectory.org](http://www.ahridirectory.org).



# Product Overview: AHRI-Certified® Plate Heat Exchangers

Series	Type	Design Pressure				DN 32/1 1/4"	DN 40/1.5"	DN50/2"	DN 65/2.5"	DN 80/3"	DN 100/4"	DN 150/6"	DN 200/8"	DN 250/10"	DN 300/12"	DN 400/16"	DN 500/20"
		0.6 MPa (87 PSI)	1.0 MPa (145 PSI)	1.6 MPa (232 PSI)	2.5 MPa (362 PSI)												
AF30	AF31	●	●	●	●	●											
	AF33		●	●	●	●	●										
AF50	AF51			●	●			●									
AF55	AF55			●	●			●									
	AF56			●	●			●									
	AF57			●	●			●									
AF60	AF61		●	●	●				●								
	AF62		●	●	●				●								
	AF63		●	●	●				●								
AF70	AF71		●	●					●								
AF80	AF80		●	●						●							
AF100	AF101		●	●	●						●						
	AF102		●	●	●						●						
	AF103		●	●	●						●						
	AF104		●	●	●						●						
AF100HE	AF106HE		●	●	●						●						
	AF107HE		●	●	●						●						
AF150	AF151		●	●	●							●					
	AF152		●	●	●							●					
	AF154		●	●	●							●					
	AF156		●	●	●							●					
AF200	AF201		●	●	●								●				
	AF202		●	●	●								●				
	AF203		●	●	●								●				
	AF204		●	●	●								●				
	AF205		●	●	●								●				
AF250	AF251	●	●	●	●									●			
	AF252	●	●	●	●									●			
	AF253	●	●	●	●									●			
AF300	AF301		●	●	●										●		
	AF302		●	●	●										●		
	AF304		●	●	●										●		
AF400	AF401		●	●												●	
AF500	AF502		●	●													●

● = AHRI Certified® Plate Heat Exchanger

## About SonFlow A/S

SonFlow has developed an optimized and efficient range of plate heat exchangers, based on more than 40 years of experience. Our product line includes industrial, sanitary, free flow, condenser/evaporator, and brazed-plate heat exchangers.

All our plate heat exchangers are designed and manufactured at our factory in Kolding, Denmark and they are customized to meet specific temperature requirements and capacities. This ensures that you will receive a plate heat exchanger that is tailored to your needs, regardless of the industry or process you are working with.



### Traditional Plate Heat Exchanger

The optimal choice for a wide range of applications across various market segments, making them a good choice for standard tasks.

### Sanitary Plate Heat Exchangers

Designed to meet the stringent hygiene standards of food-, dairy-, beverage-, pharmaceutical industries, and related sectors.

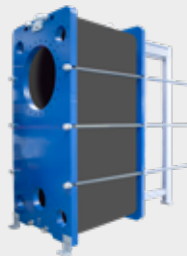


### Brazed Plate Heat Exchangers

Permanently sealed units ensure peak performance, unmatched durability, and minimal downtime.

### Condenser and Evaporators Plate Heat Exchanger

Designed to condense low-pressure vapour and evaporation duties. Well-suited for tasks involving significant temperature differentials between the cold and hot sides.



Aage Søndergaard Nielsen  
Founder & CEO